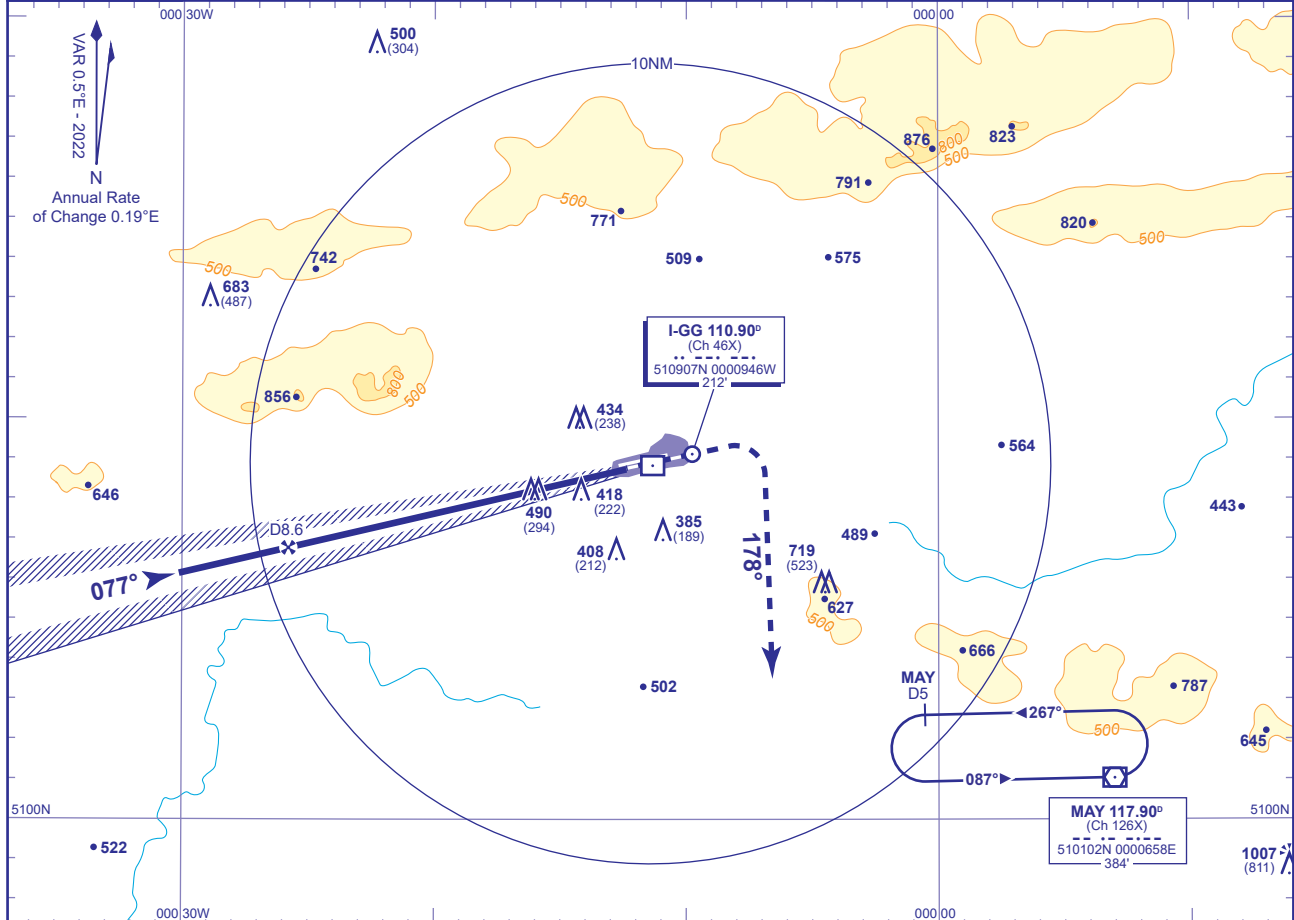
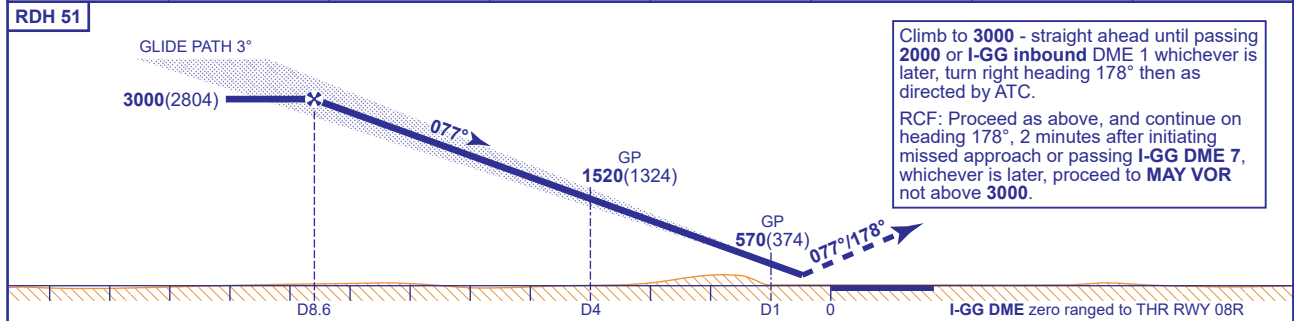


	APP	126.825, 118.950, 129.025	GATWICK DIRECTOR	AD ELEVATION	203	TRANSITION ALTITUDE 6000
	TWR	124.230, 134.230, 121.500*	GATWICK TOWER (*Emergency)	THR ELEVATION	196	
		121.805	GATWICK GROUND	OBSTACLE ELEVATION	1007 AMSL (811) (ABOVE THR)	
	ATIS	136.525	GATWICK INFORMATION	BEARINGS ARE MAGNETIC		



RECOMMENDED PROFILE GLIDE PATH 3°, 320FT/NM							
DME I-GG	8	7	6	5	4	3	2
ALT(HGT)	2800(2604)	2480(2284)	2160(1964)	1840(1644)	1520(1324)	1200(1004)	880(684)



Aircraft Category		A	B	C	D	Rate of descent	G/S KT	160	140	120	100	80
OCA (OCH)		CAT I	338(142)	349(153)	364(168)	384(188)	FT/MIN	850	740	640	530	420
VM(C)OCA (OCH AAL)		CAT II	245(49)	255(59)	268(72)	284(88)						
Total Area		800(597)	800(597)	1020(817)	1120(917)							

FOR AIRCRAFT UNABLE TO RECEIVE DME I-GG :
Equivalent radar ranges will be provided to the aircraft when established on the localiser, approaching the nominal Final Approach Point and 4NM points.

NOTE 1 For arrival and initial approach procedures see AD 2-EGKK-7-17.

CHANGE (5/25): VM(C)OCA(OCH AAL) CAT C. OCA(OCH) CAT I CAT A/B/C/D CAT II CAT A/D.